

Choosing Our Future



Why Marion County Needs a New Detention Center

I. Why do we need a new jail?

- a. The State of Arkansas has informed our County that our jail does not meet state standards and will be closed.
- b. The County outgrew the facility and has been out of compliance for many years.
- c. Both Baxter and Boone counties are at capacity levels for holding prisoners.
- d. Costs to build these facilities are doubling every 6-8 years. Now is the time to build.

II. Why build such a big jail?

- a. We are allowing for future needs of this County.
- b. We can “rent” beds to the state (Department of Corrections) generating an estimated \$3.5 million over 10 years.
- c. The efficiency of the design and technology of the 94 bed facility only increases operating costs by 10% than that of a 62 bed facility.

III. Can we afford it? OR How will we pay for it?

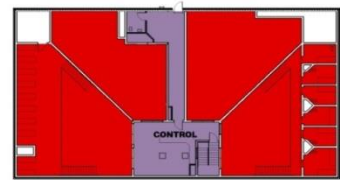
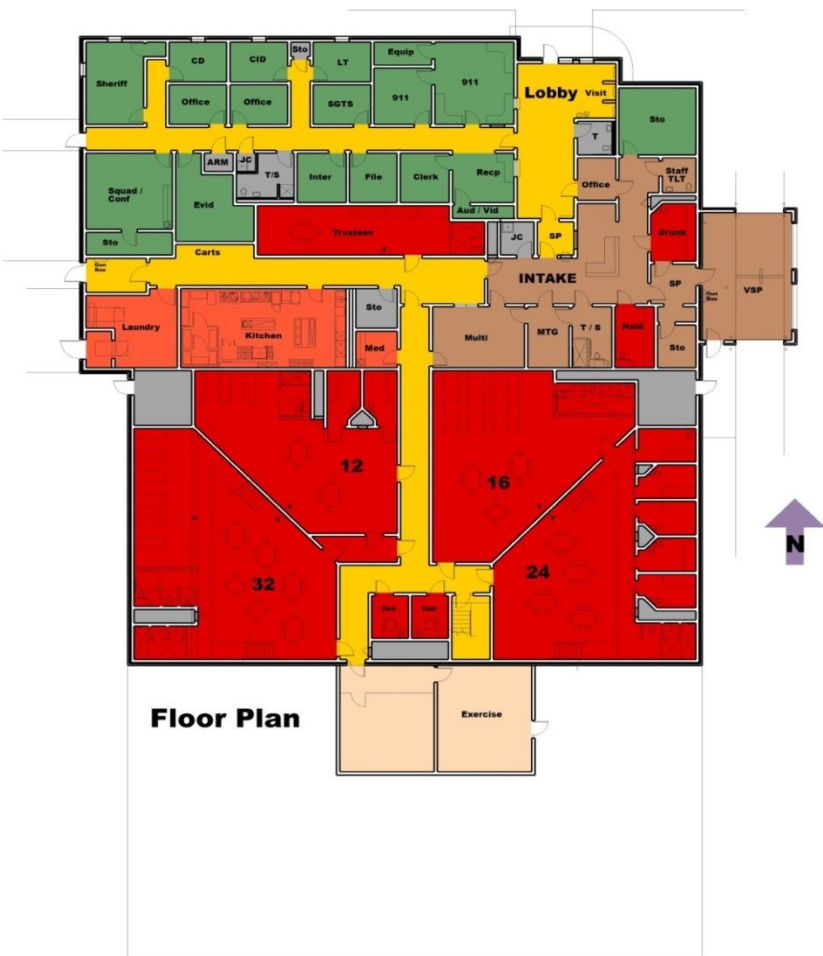
- a. We cannot afford **NOT** to build
- b. Housing and transport costs will eat up any savings of closing the current facility and then some (over \$200,000 in year one).
- c. Rising costs of building in the future will be cost prohibitive.
- d. Law enforcement efforts will be neutered in all but the most violent crimes.
- e. Quality of life will suffer.

IV. Why a sales tax?

- a. It's the fairest avenue – everyone shares in the cost not just property owners.
- b. Tourism will help bear the cost of providing a safe environment as they enjoy our lakes and rivers.
- c. A large portion of the sales tax will be retired when the debt for the new facility is paid.

V. Why not renovate the existing jail?

- a. It is not cost effective and will still result in an inadequate facility.
- b. Cost of housing and transporting prisoners during renovation of current facility would add hundreds of thousands to overall cost of renovation.



Mezz.

Floor Plan